



DEKO 2 DUE C



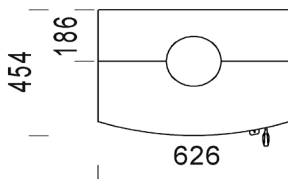
DEKO 2 DUE CL



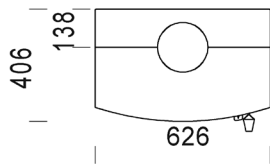
DEKO 2 DUE S



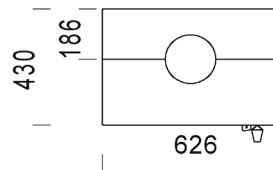
DEKO 2 DUE SL



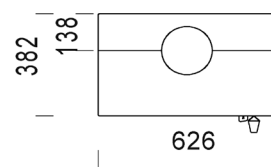
DEKO 2 DUE C



DEKO 2 DUE CL



DEKO 2 DUE S



DEKO 2 DUE SL

Product pictures are with bottom plinth.

PRODUCT INFORMATION:

Nominal heat output: 8,5 kW
 Energy efficiency: 86,5 %
 CO%: 0,065 %

PRODUCT NUMBERS:

Product	Product number	Weight kg	Height mm
DEKO 2 DUE C	708220-1	518	1346
DEKO 2 DUE CL	708200-1	405	1346
DEKO 2 DUE S	708230-1	513	1346
DEKO 2 DUE SL	708210-1	402	1346

ACCESSORIES:

Product	Product number	Weight kg	Height mm
Bottom plinth DEKO 2 DUE C	MO1937	31	48
Bottom plinth DEKO 2 DUE CL	MO1939	27	48
Bottom plinth DEKO 2 DUE S	MO1933	30	48
Bottom plinth DEKO 2 DUE SL	MO1935	26	48

PRODUCT INFORMATION

	FIREWOOD		FLUE CALCULATION VALUES ⁽¹⁾				MAX. FLUE TEMPERATURE IN SECURITY TEST
	Length [cm]	Max amount of wood [kg/h]	Flue gas temperature [°C]	Min. flue draught [Pa]	Mass flow [g/s]	Flue connection Ø (min.)	Temperature °C
Deko 2 Due C/CL/S/SL	33	2,33	182	-12	9,2	150	

FLUE CONNECTION TABLE

	RECOMMENDED FLUE [mm]	INCOMING AIR
	round Ø	Incoming air pipe location L [mm]
Deko 2 Due C/S	150	198
Deko 2 Due CL/SL	150	150

SAFETY DISTANCES TO COMBUSTIBLE MATERIALS

	CE-approval according to EN 13240			
	Behind	On the sides	Front	Top
Deko 2 Due CL/SL	80	150	800	800
Deko 2 Due C/S				

¹⁾ The flue calculation values apply for countries that require flue calculation in accordance with the DIN 18160 and DIN EN 13384 standards.

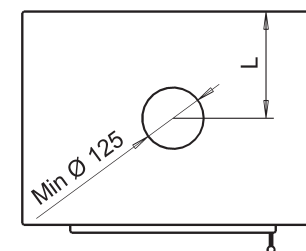
Take a notice of the countryspecific approvals in section 3

NOTES!

The recommended minimum flue height is 5 m. In countries where the flue calculation is required, should the calculation be done according to the instructions and regulations of the flue calculation.

A damper designed for adjusting the draft is always recommended for a flue connection or flue.

Country- and region-specific regulations must be adhered to when installing the fireplace



Location of the incoming air